



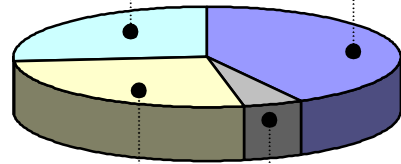
**Bestandteile
Pflanzenreste**

Zellulose (33% - 51%)

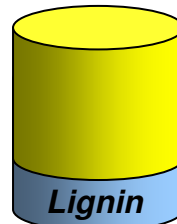
Hemizellulose (19% - 34%)

Lignin (21% - 32%)

Zellulose (1% - 5%)

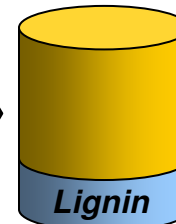


Verdünnte
Säure



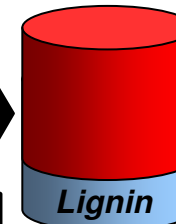
*Hemizellulose-
Hydrolyse*

Enzyme



*Zellulose-
Hydrolyse*

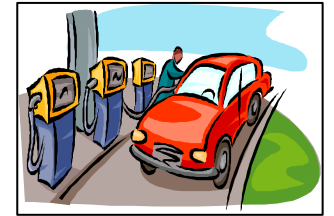
Hefe



Fermentation

Destillation

Ethanol



Lignin

Dampf

Elektrizität

Heizkraftwerk

